



5 Greenfields Way, Stockton-On-Tees, TS18 5QD

Asking Price £230,000

EXTENDED DETACHED HOUSE ideally suited to a family, offering spacious open plan living and benefiting from a South Westerly facing rear garden.

The property is situated in a cul de sac of a popular residential location and is well positioned for easy access to local reputable schools, shops, amenities and bus routes. To the front aspect the home is set back from the roadside and provides a generous block paved driveway, with turning area, providing ample off road parking and leading to the property entrance. The entrance hall is of good size with lots of storage provided and has a door into the ground floor bedroom, a flexible room which was previously used as an additional reception room and ideal for a range of uses. An opening from the entrance hall leads to the family room which is open plan design with the kitchen/dining room which is fitted with a contemporary range of units including breakfast bar, Flavel range cooker and integrated dishwasher, with four panel bi-fold doors opening to the rear garden. The inner hall provides access to a lounge, cloakroom/wc and staircase to the first floor landing. Located on the first floor is the master bedroom with built in wardrobes, two further bedrooms and a family bathroom fitted with modern suite including 'P' shaped bath with shower fitting and curved screen. To the rear of the property is a well presented enclosed garden with low maintenance artificial lawn and generous paved patio. This impressive home is presented to a high standard throughout and offers flexible and versatile family living, viewings are highly recommended.

ENTRANCE HALL

GROUND FLOOR BEDROOM 18'4" x 7'0" (5.59 x 2.13)

FAMILY ROOM 16'9" x 11'8" (5.11 x 3.56 (5.10 x 3.55))

KITCHEN/DINING 21'1" x 9'11" (6.43 x 3.02)

INNER HALL

CLOAKROOM/WC

LOUNGE 16'11" x 10'7" (5.16 x 3.23 (5.15 x 3.22))

FIRST FLOOR LANDING

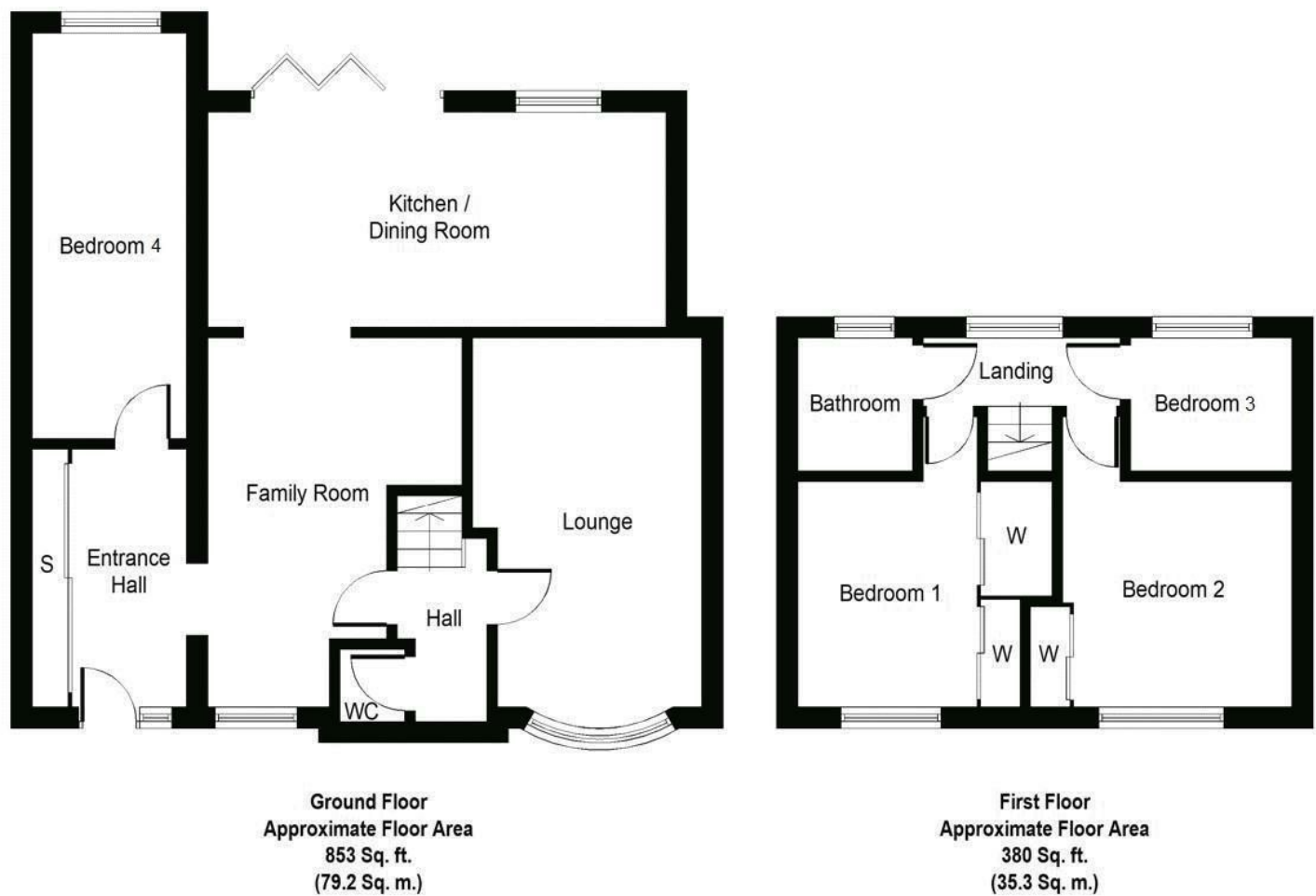
BEDROOM ONE 10'8" x 10'3" (3.25 x 3.12)
Plus recess with built in wardrobes.

BEDROOM TWO 11'11" x 10'2" (3.63 x 3.10)

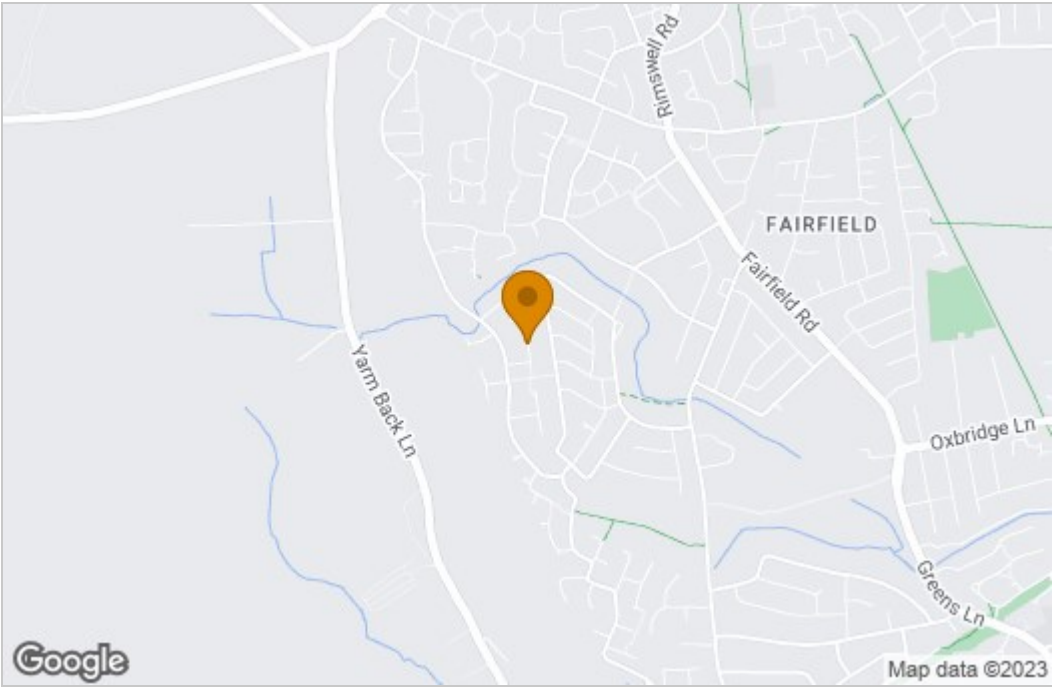
BEDROOM THREE 7'11" x 6'8" (2.41 x 2.03)

BATHROOM 6'7" x 5'10" (2.01 x 1.78)

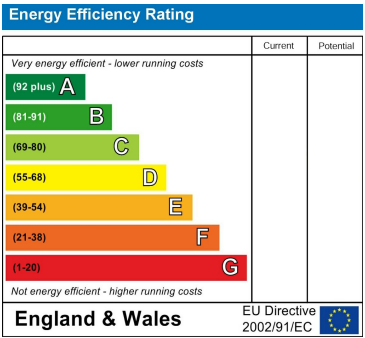
Floor Plan



Area Map



Energy Efficiency Graph



These particulars, whilst believed to be accurate are set out as a general outline only for guidance and do not constitute any part of an offer or contract. Intending purchasers should not rely on them as statements of representation of fact, but must satisfy themselves by inspection or otherwise as to their accuracy. No person in this firm's employment has the authority to make or give any representation or warranty in respect of the property.